



From the Artistic Director



Does familiarity breed contempt?

Several years after the successful premiere of his Gurrelieder in 1913 Arnold Schoenberg was asked how he felt about the subsequent loss of an audience for his music since most of the musical establishment and the public rejected his later compositions. Schoenberg responded in 1937 in an essay entitled *How one becomes lonely*: "I was rather indifferent, if not even a little angry. I foresaw that this success would have no influence on the fate of my later works . . . I had to fight for every new work; I had been offended in the most outrageous manner by criticism; I had lost friends and I had completely lost any belief in the judgement of friends. And I stood alone against a world of enemies."

Clearly, a composer alienated from the public but also a public alienated from the composer. Case in point: WCP recently played two concerts at the Austrian Cultural Forum

☛ continued page 2

Outreach & Education

A match made in . . . Worcester!

Walden's outreach programs at the Mass. Academy of Math & Science continue to be highlights of our seasons. Collaborating with the faculty and students at the Academy has proven to be some of the most rewarding and inspiring work we can imagine. We are therefore very excited

to announce that the Academy has recently named the WCP it's ensemble-in-residence. We plan on continuing our presence in the city of Worcester and our residence at the Academy is an important part of our commitment to bringing high-quality musical performances and arts programs to this city.



"I enjoyed this past week's focus on Romanticism immensely . . . I learned a great deal more about the life of Brahms, as well as other aspects of the Romantic period. This was a great experience."

– Mass. Academy student

Left, students and musicians in "the brick-yard" at the Academy



Work in progress (above and left)—the process of putting together the humanities presentation, "Thou art all my Art", the Elizabethan age in music, poetry, and image.

Oh, that abstract contemporary music!



Arnold Schoenberg

At a recent concert we performed Schoenberg's string trio which has become a staple of our repertoire. We preceded the performance with an introductory talk in which we told the audience about the genesis of the piece. An asthmatic, Schoenberg once had a serious attack during which his heart stopped. Only an injection directly into the composer's heart would save him. According to Schoenberg, he incorporated all of those events into the composition of the string trio.

Immediately following the performance we engaged the audience in a discussion about the piece. One of the audience members told of her brother who suffers himself from asthmatic attacks. Apparently he had been trying to explain to her for many years what the experience is like when he feels an attack coming on but she had never been quite able to comprehend it. She said that, after hearing Schoenberg's string trio, she now completely understood what her brother was going through.

The Walden Quiz

The winner of the last newsletter's quiz was **14**-year-old David Pesetsky! He answered the question "Why was the number **14** so important to J.S. Bach?" correctly. The letters of the composer's last name translated numerically according to their place in the alphabet add up to the number **14**.

Here is the new quiz-question:

The great German romantic composer Johannes Brahms used the triangle in only one of his Symphonies. Which one and in which movement?

If you think you have the answer please call the Walden line @ (866)393-2927 or email us at info@waldenchamberplayers.org. The winner will receive one of our cd's!

(The answer will be in our next newsletter.)

Foundations Support Walden in Worcester

The Walden Chamber Players was recently awarded several grants underwriting our outreach, education and programming efforts. The Greater Worcester Community Foundation, the American Composers Forum and the Worcester Cultural Council all awarded grants to WCP in support of our programs in the city of Worcester. We are most grateful to these organizations for their vote of confidence in the Walden Chamber Players!

The 2006/07 season is shaping up to be an exciting one with a focus on the east coast, in venues old and new. Watch for more detailed information in late summer.

- **Westchester Chamber Music Society**
Rye, NY
September 17, 2006
- **Newton, MA**
date tbd
- **Candlelight Concerts**
Hingham, MA
November 19, 2006
- **Mass. Academy of Math & Science**
Residency
Worcester, MA
date tbd
- **Smith College**
In collaboration with the Smith Chamber Ensemble
Northampton, MA
date tbd
- **Washington, D.C**
January 16-21, 2007
- **Syracuse Friends of Chamber Music**
Syracuse, NY
February 17, 2007
- **Newtown Friends of Music**
Newtown, CT
(concert & outreach program)
March 11 & 12, 2007
- **Austrian Cultural Forum**
New York, NY
March 23, 2007
- **Hudson Valley Music Club**
Dobbs Ferry, NY
March 26, 2007
- **Chamber Music Society of Utica**
Utica, NY
April 1, 2007
- **The Danbury Concert Association**
Danbury, CT
May 19, 2007
- **Friends of Chamber Music of Troy**
Troy, NY
date tbd
- **Tuckerman Hall**
Worcester, MA
date tbd
- **Live appearance on WGBH**
date tbd
- **Sterling & Francine Clark Art Institute**
Williamstown, MA
date tbd
- **Nantucket Historical Association**
Nantucket, MA
"China Trade"
June 2007

'06/07 Season Preview

Artistic Director continued —

in NYC, primarily dedicated to works of contemporary composers. We had also included on one of the programs the string trio by Schoenberg. This work, composed in 1946, actually presented one of the oldest pieces on the programs since it had been composed 60 years ago. The audience attending these concerts was clearly interested and enthusiastic about contemporary music. However, when we came back onstage at one of the concerts to conclude the program with Schoenberg's string trio it became quickly

apparent that a good part of the audience had left.

So, what is the reason for the persistent rejection of the composer by the audience, even 50 years after his death?

One of the most often cited reasons for the lack of appreciation of contemporary music in general is that it sounds alien, disturbing and that the audience cannot relate to it emotionally.

I, on the other hand, find the important German philosopher Theodor Adorno's theory more intriguing and applicable - that the music is so closely related to today's life and it's stresses,

anxieties, sounds and pacing that the audience feels discomfited. In other words, does familiarity breed contempt?

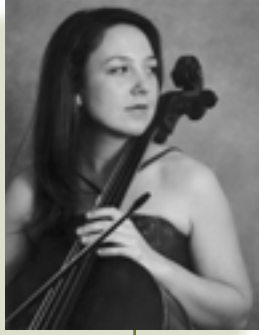
Let me close by citing another quote from the composer - this one from a letter to Roger Sessions, written in 1944: " And finally I want to mention what I consider the greatest value for a possible appreciation of my music: . . . one must listen to it in the same manner as to every kind of music, forget the theories, the twelve-tone method, the dissonances etc., and, I would add, if possible the author."

Christof Huebner

“ In the light of music there is no thou or I. We are actually lifted above ourselves.

– Henry David Thoreau

Walden Welcomes New Cellist



We are delighted to announce that cellist Ashima Scripp has joined Walden recently. Ashima has been a frequent guest artist with the group over the last few seasons and we are pleased that she is now a permanent member of the Walden Chamber Players. Although a Newton native she has spent most of her time in the last few years performing in Chicago and Cincinnati. Ashima was very happy to be able to continue her career and return "home" in one move. It's a win-win proposition!

Ashima has performed with orchestras, ensembles and in recital in major concert halls around the world including New York's Carnegie Hall, Tokyo Opera City Concert Hall, Boston's Symphony Hall, Chicago's Symphony Center and Boston's Jordan Hall. She has been featured on Los Angeles' KMozart and Boston's WGBH, and in the Pioneer Press. Ashima has received top prizes at many competitions across the United States. This past summer she was invited as one of only three national semi-finalists to the National Federation of Music Clubs Young Artist Competition.

She has studied chamber music with members of the Juilliard, Cleveland, American, Muir, Chicago, Mendelssohn, Pacifica Quartets, and the Beaux Arts Trio and has participated in numerous chamber music festivals in the US and abroad. Ashima holds degrees from the Manhattan School of Music and Northwestern University.

Upcoming Concerts

May 7, 2006, 3pm
Tuckerman Hall
Worcester, MA

May 21, 2006, 3 pm
Clark Art Institute
Williamstown, MA

May 26, 2006, 7 pm
Nantucket Historical
Association
Nantucket, MA

For details, visit our website:
waldenchamberplayers.org

The Walden Chamber Players

Tatiana Dimitriadis - violin
Alexander Velinzon - violin
Irina Muresanu - violin
Christof Huebner - viola
Ashima Scripp - cello
Lawrence Wolfe - bass
Marianne Gedigian - flute
Laura Ahlbeck - oboe
Thomas Martin - clarinet
Richard Ranti - bassoon
Richard Sebring - horn
Jonathan Bass - piano

The Walden Chamber Players Board of Artistic Advisors

Imogen Cooper
Federico Cortese
Branford Marsalis
Stephen Paulus
Paul Polivnick
Augusta Read Thomas

Artists-in-Residence
Massachusetts Academy
of Math & Science
Worcester, MA

Contact Us!

For more information about the Walden Chamber Players, contact us at 866/393-2927 or visit us at www.waldenchamberplayers.org.

Walden
Chamber Players

P.O. Box 382
Arlington, MA 02476

*Music . . . the human experience
translated into sound™*

Presorted Standard
U.S. Postage
PAID
Boston, MA
Permit No. 405

